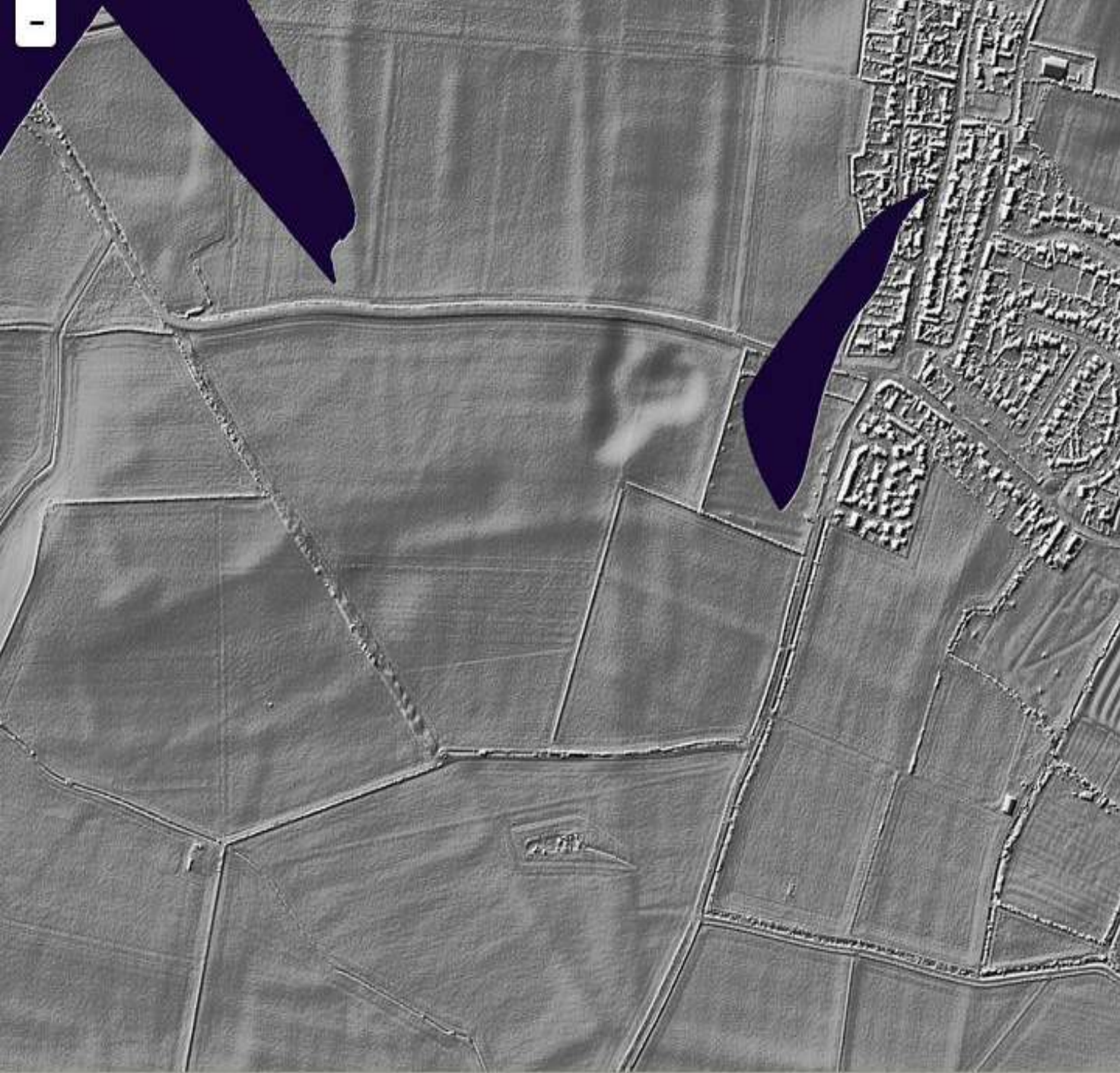


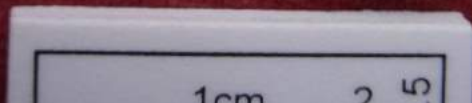
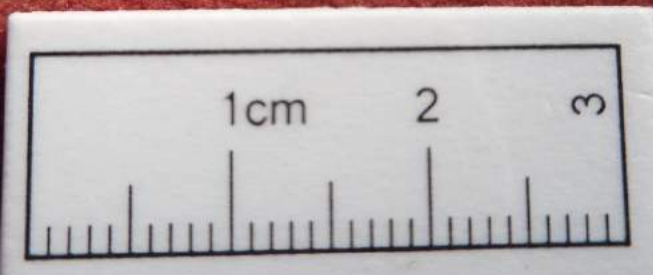
The Medieval and Early Modern Landscape of Ailsworth, Castor and Milton

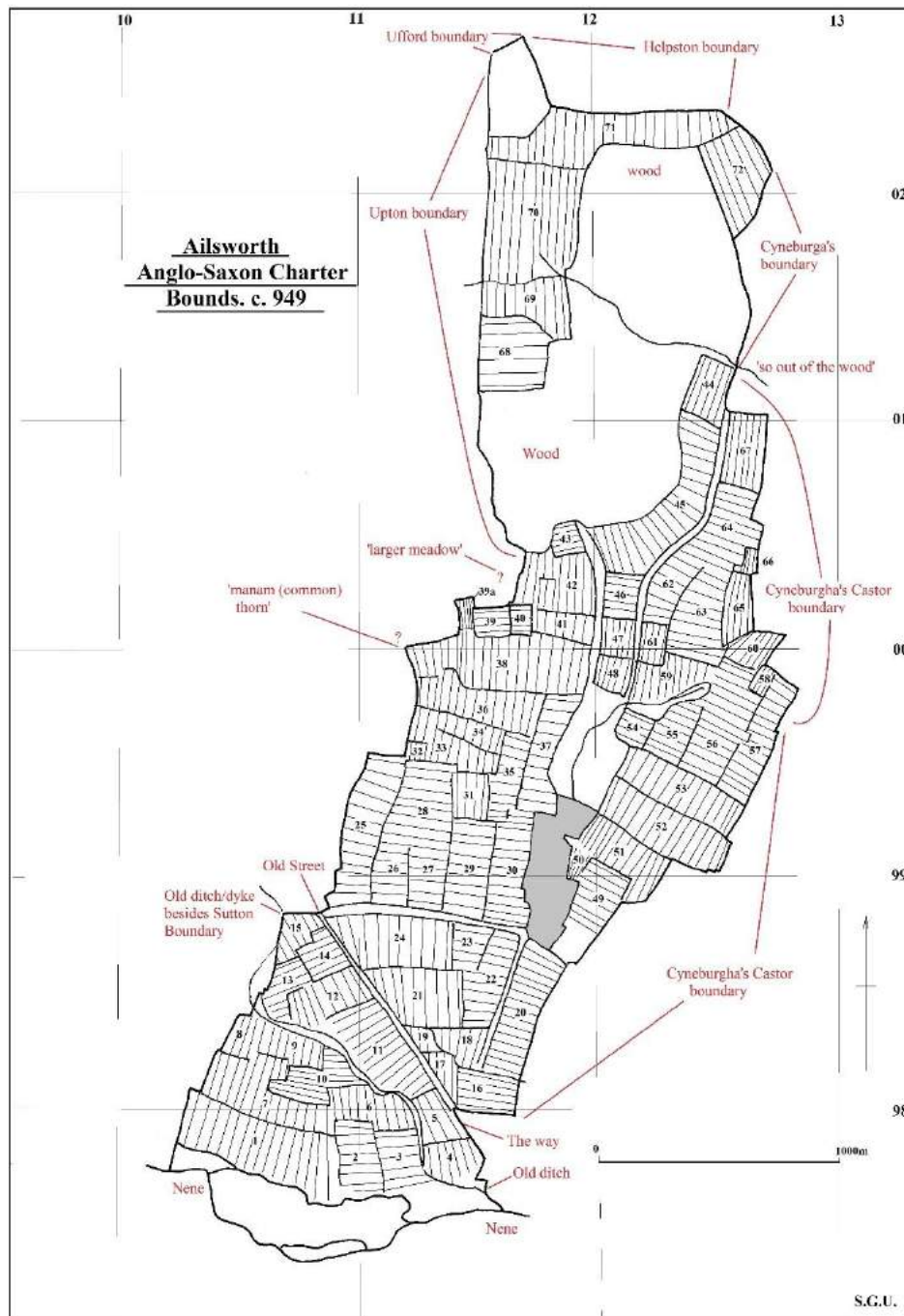












Ailsworth. Anglo-Saxon Charter c. 948

‘These are the land boundaries to Ailsworth
 First up from the Nene to the old ditch/dyke besides
 Sutton boundary
 From the ditch to the old street to *maman* thorn
 Thence to boundary larger meadow straight on to the
 wood
 So in the wood by Upton boundary so to Ufford
 boundary
 Thence to Helpston boundary so to Cyneburga’s
 Castor boundary so out of the wood
 From the wood to Cyneburga’s Castor boundary to
 the way
 Over the way ditch along the old ditch /dyke
 From the ditch back to the Nene’



Three Field System

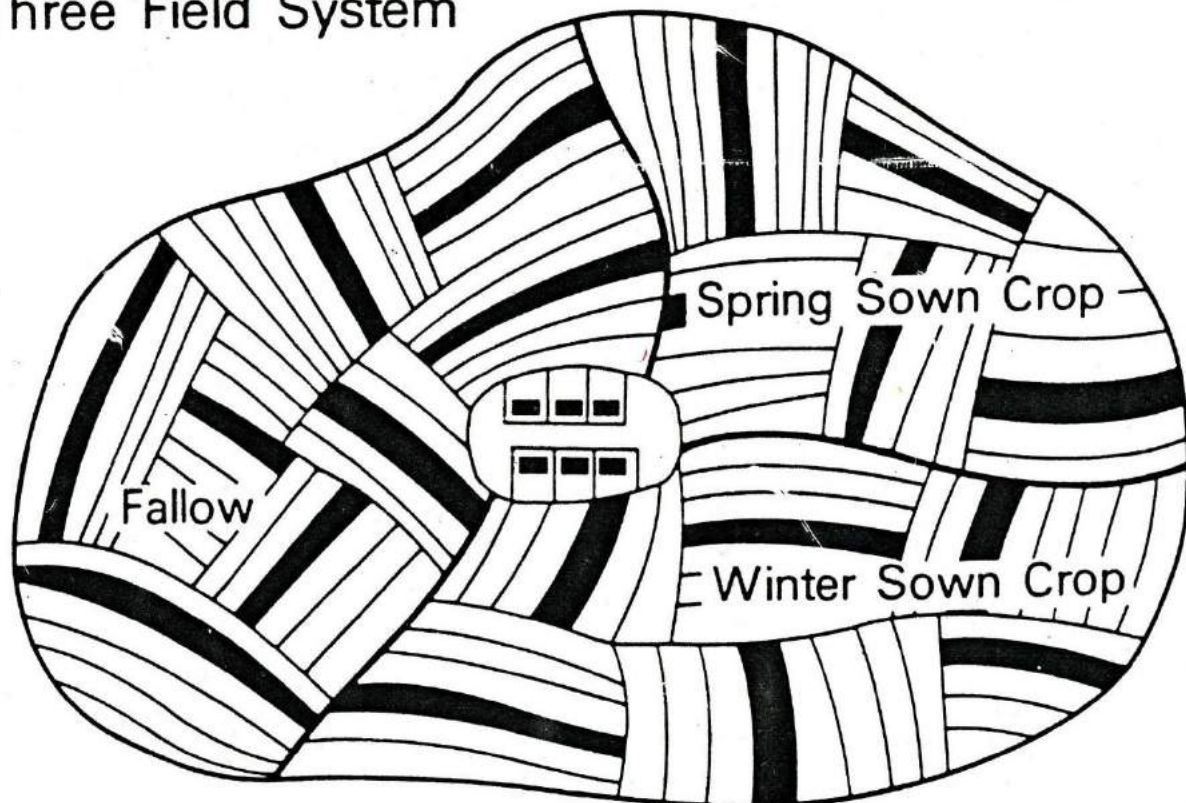
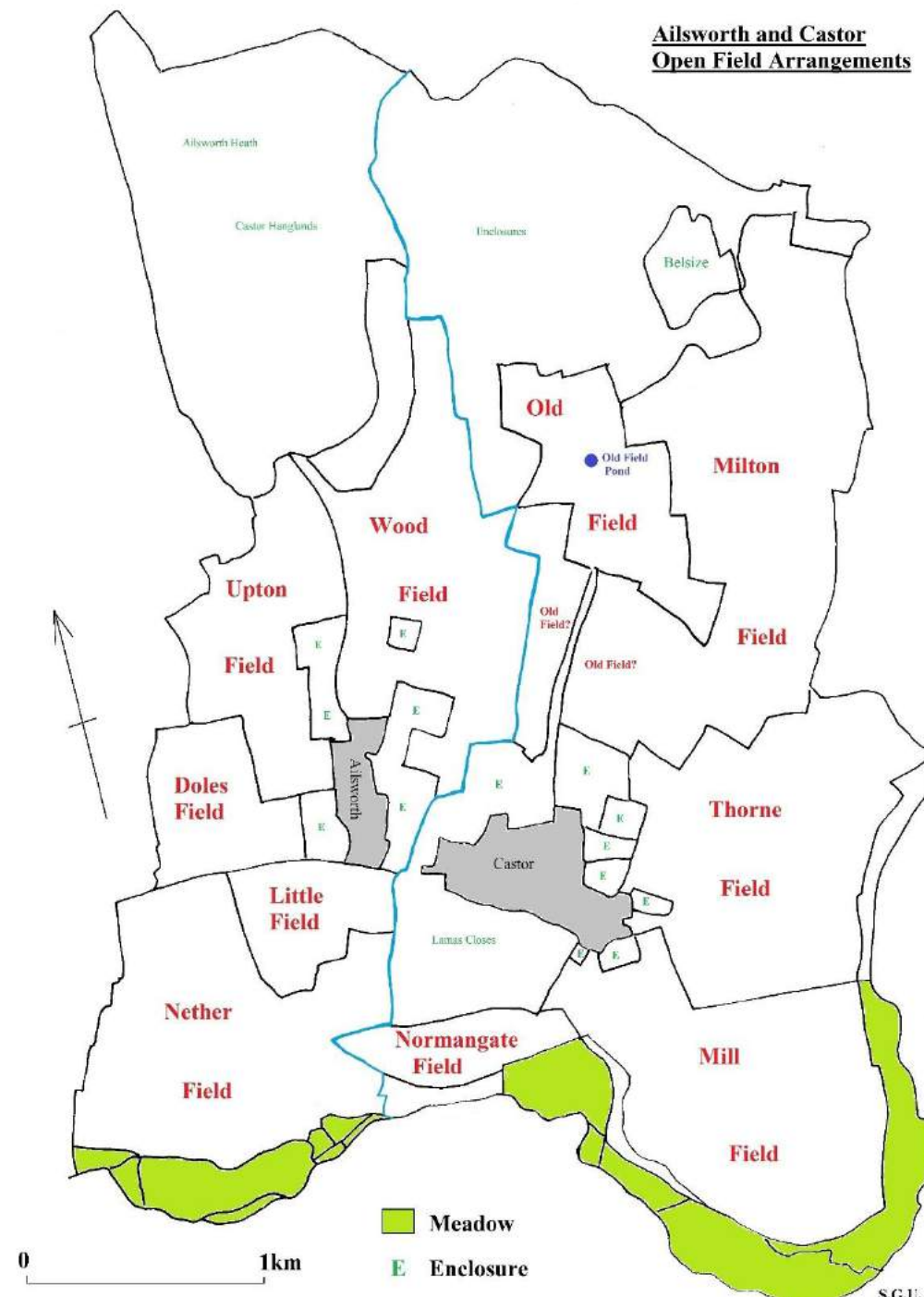
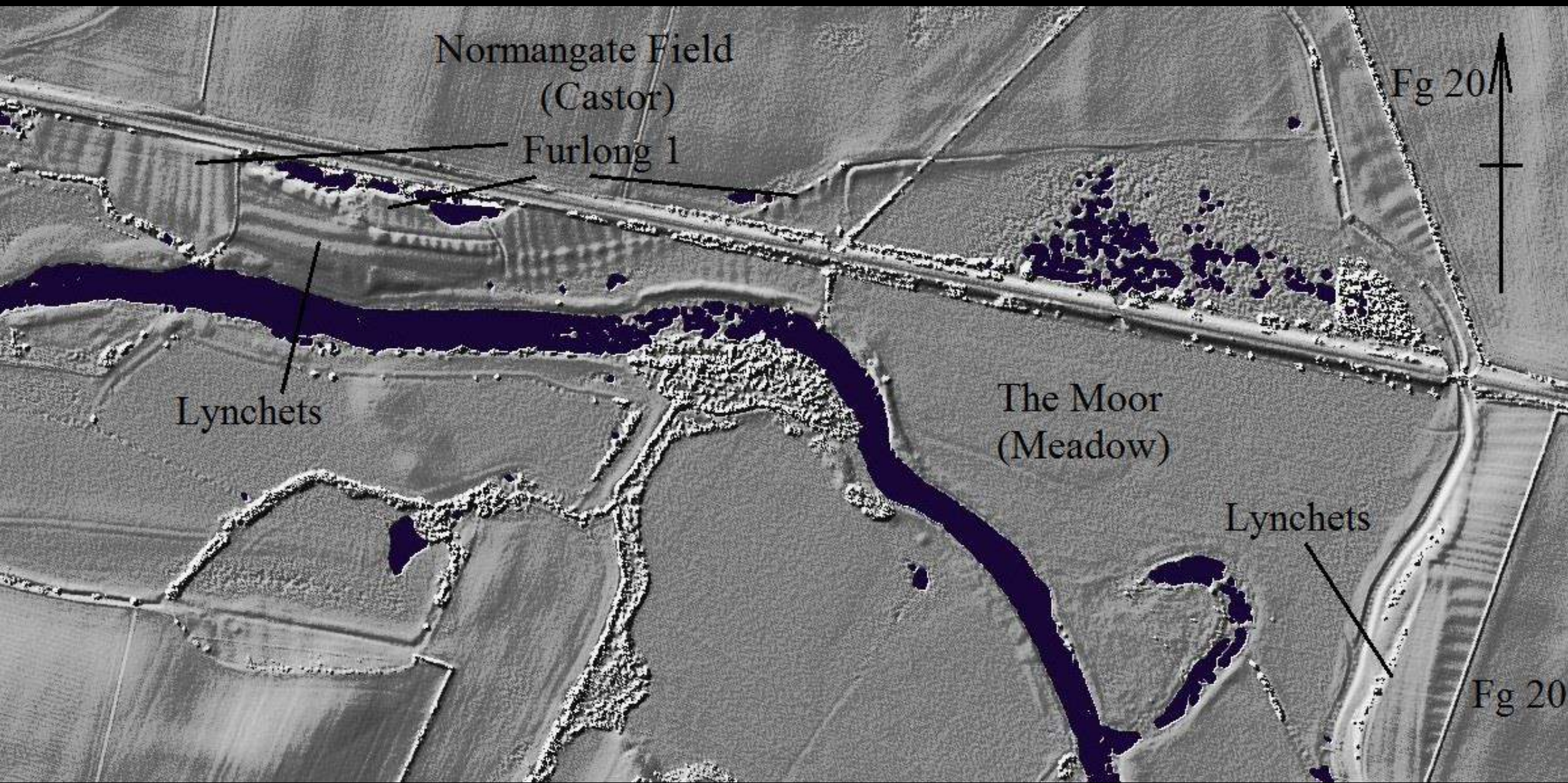


Fig. 1. Layout of a three-field cropping system.

Ailsworth and Castor Open Field Arrangements













The Drift

Old Field
Common

Cow Lane

Castor
Village

Headland 'A' forming
the Parish Boundary

Headland 'B'

Headland 'C'

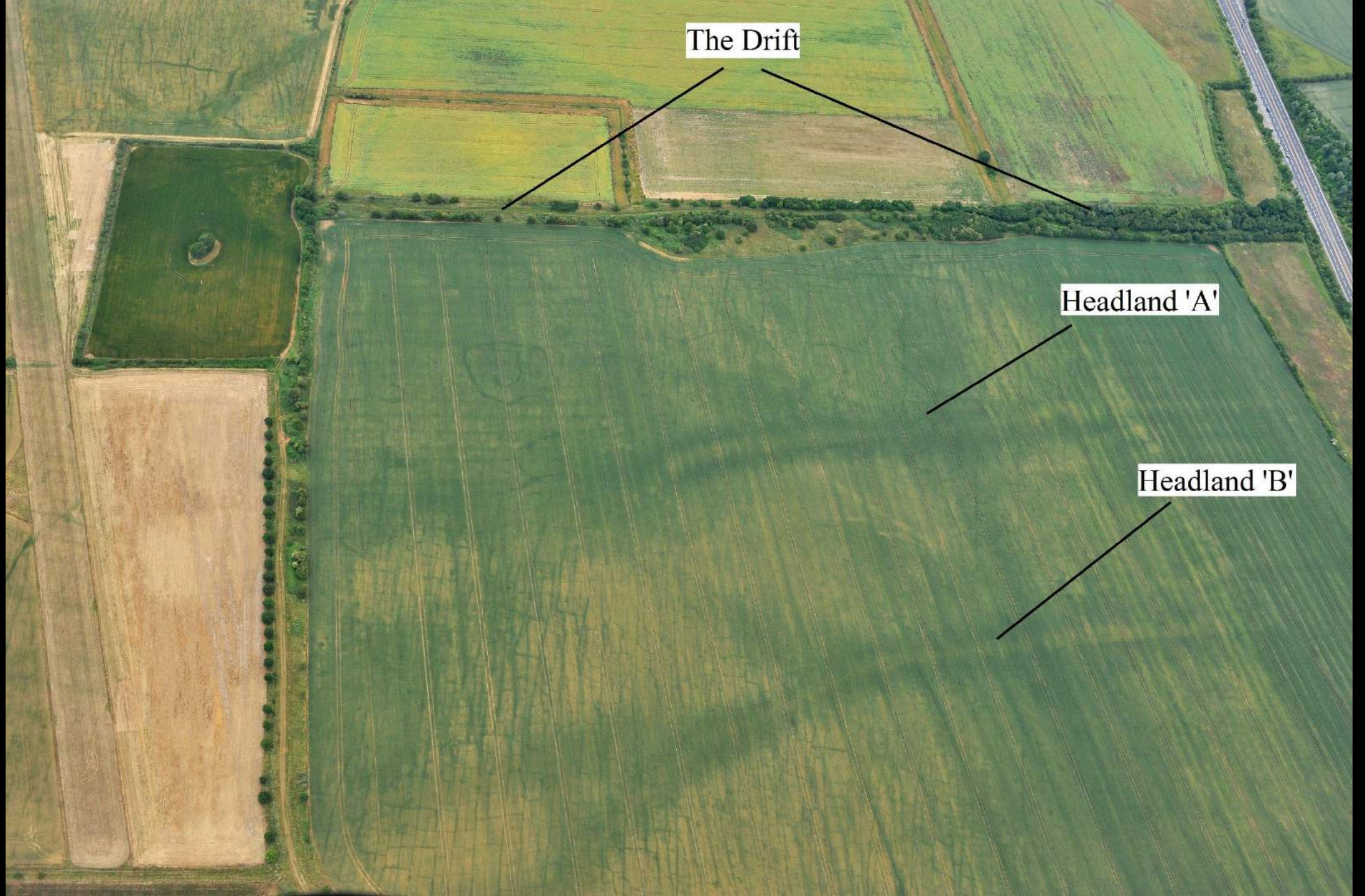
Clay Lane

c. 1846

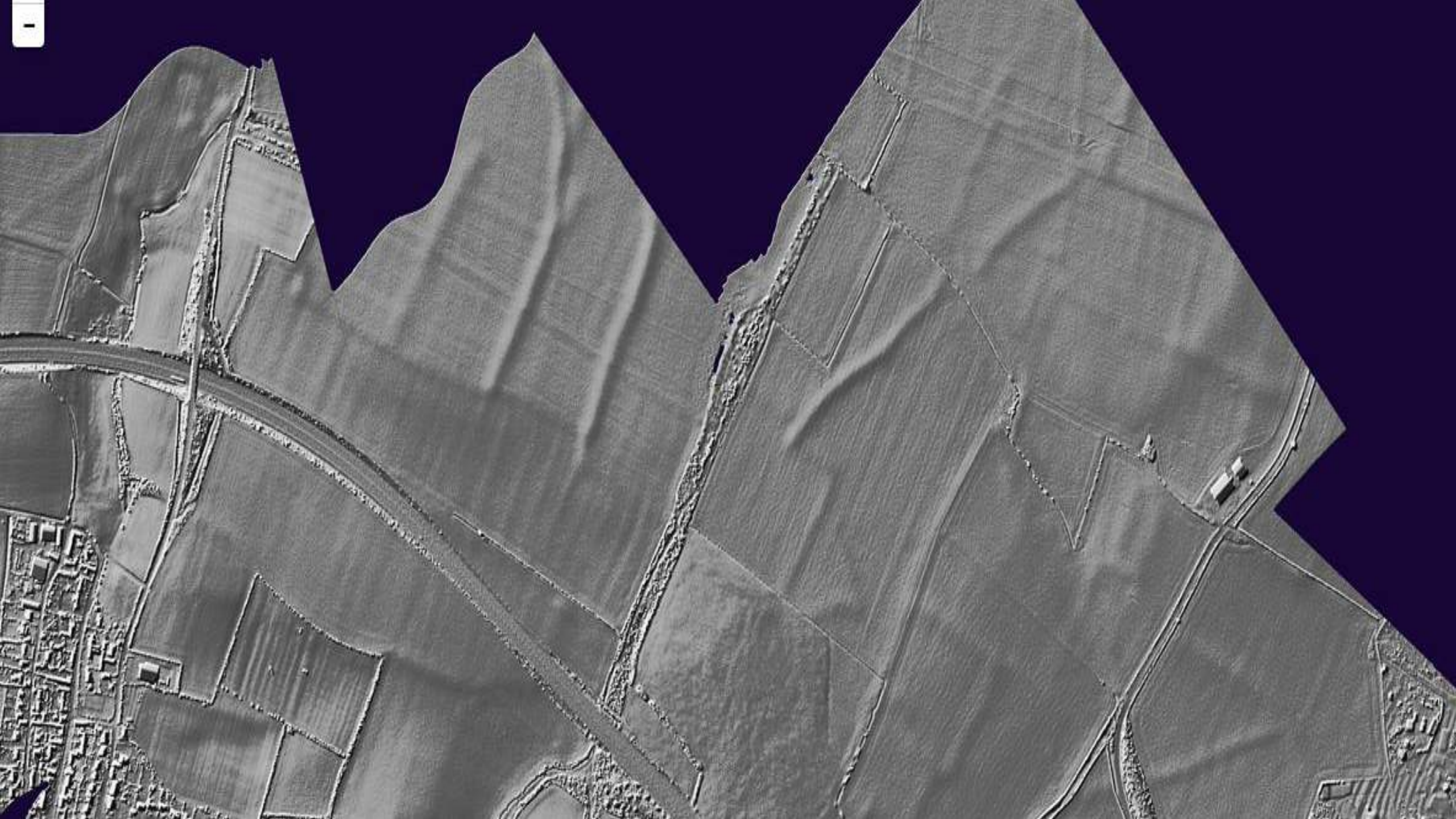
The Drift

Headland 'A'

Headland 'B'

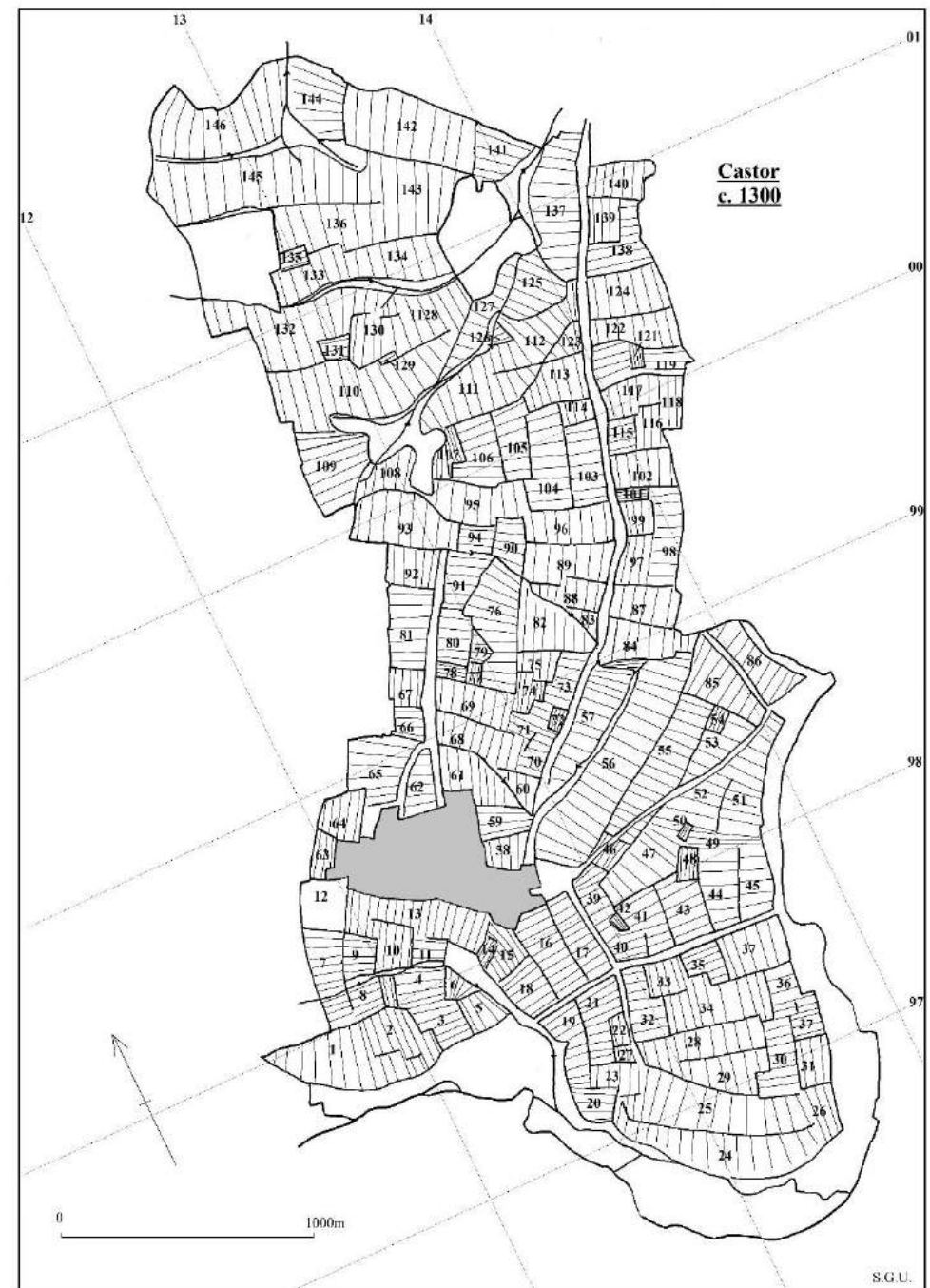
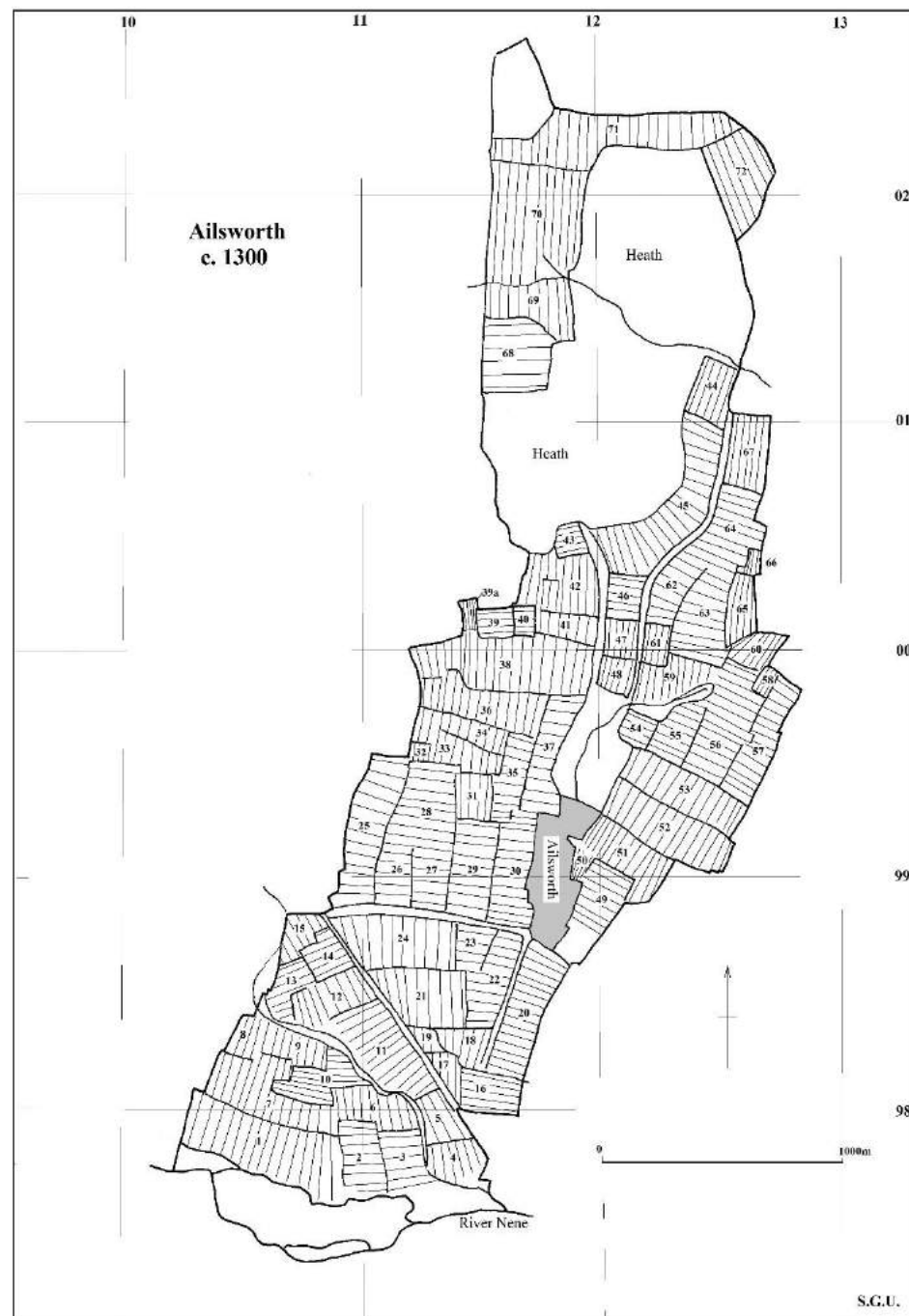


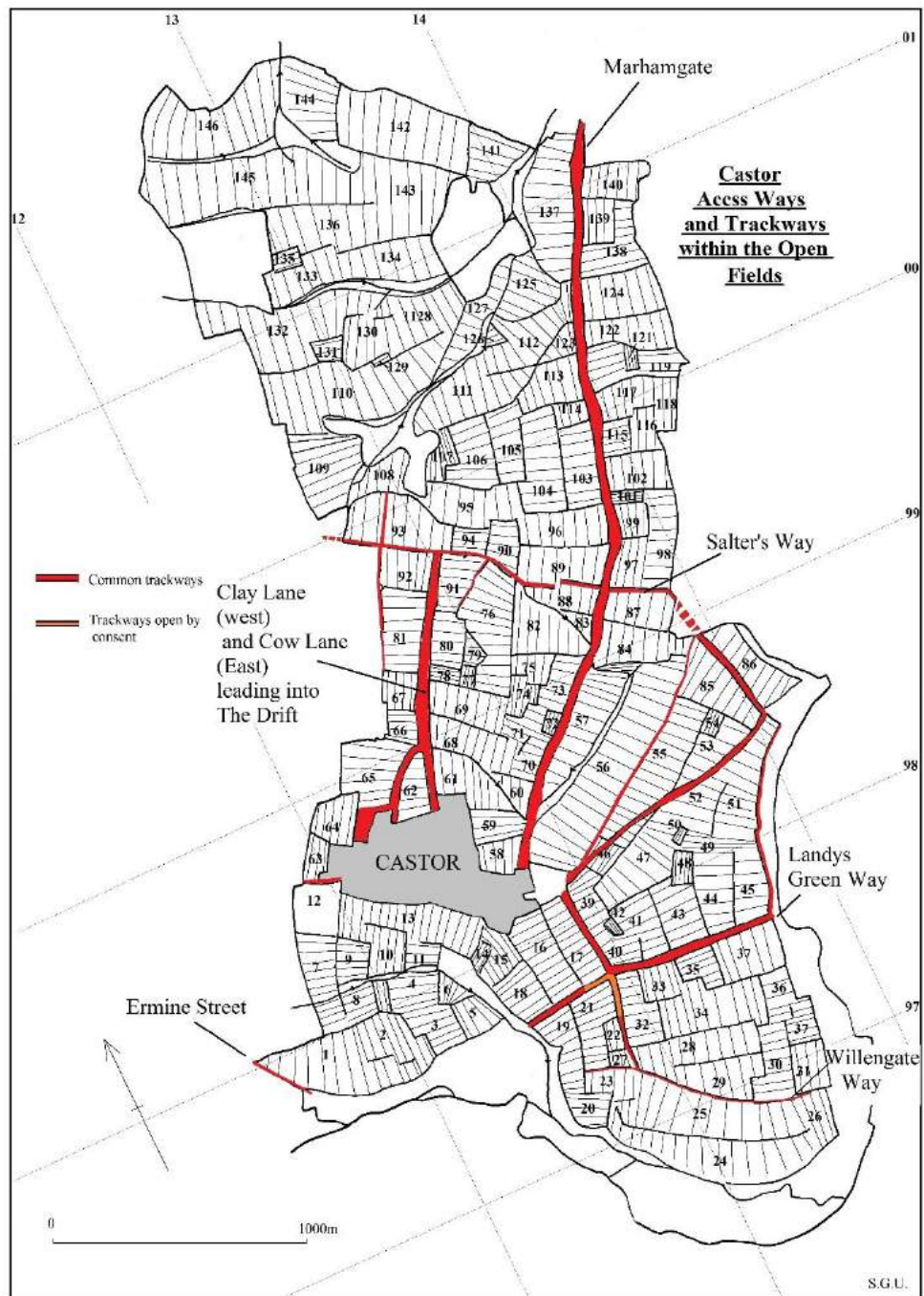






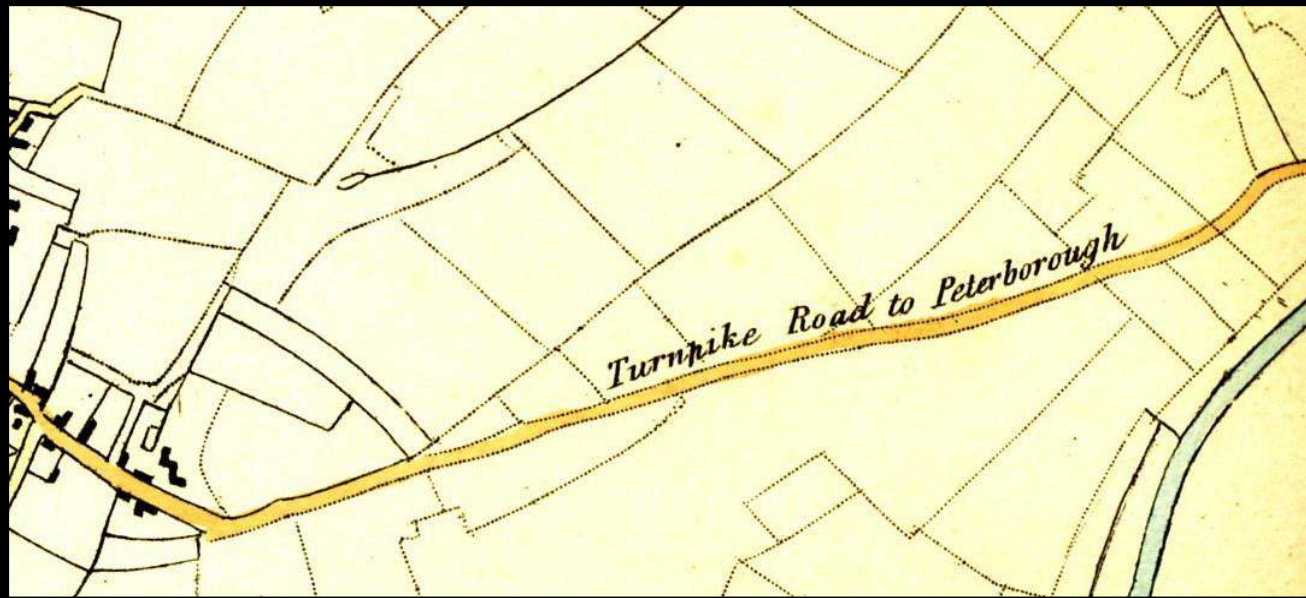




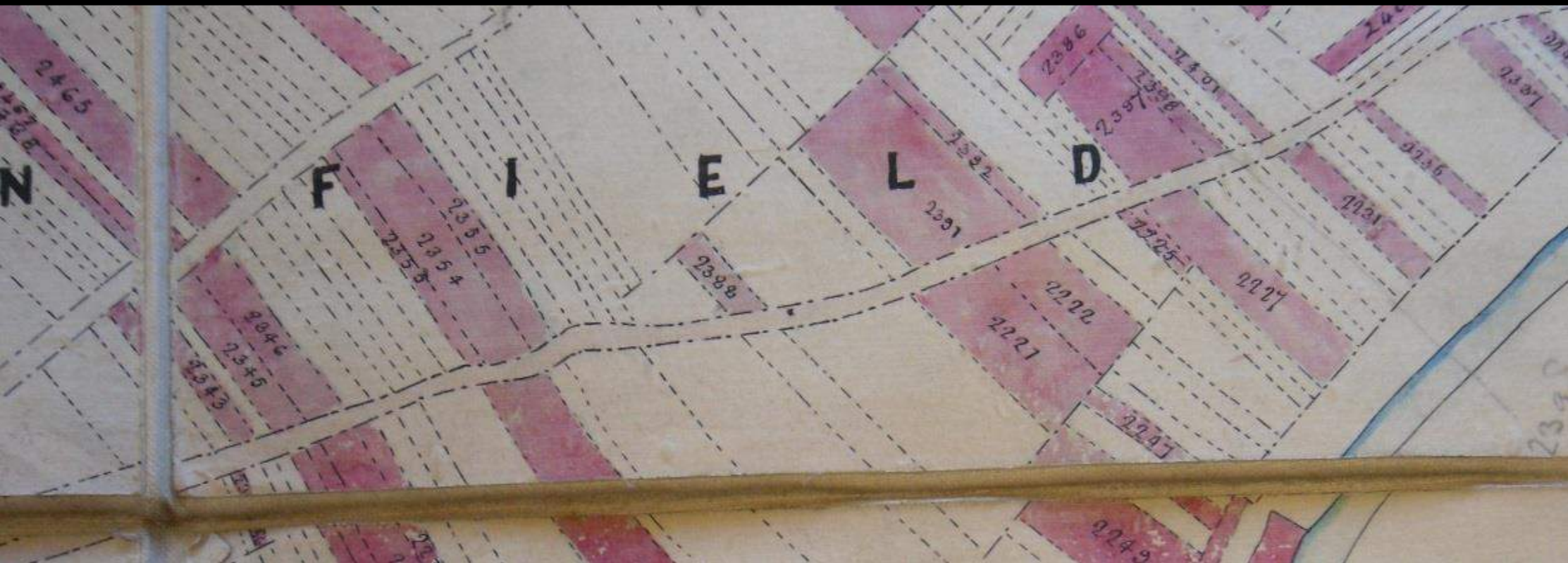




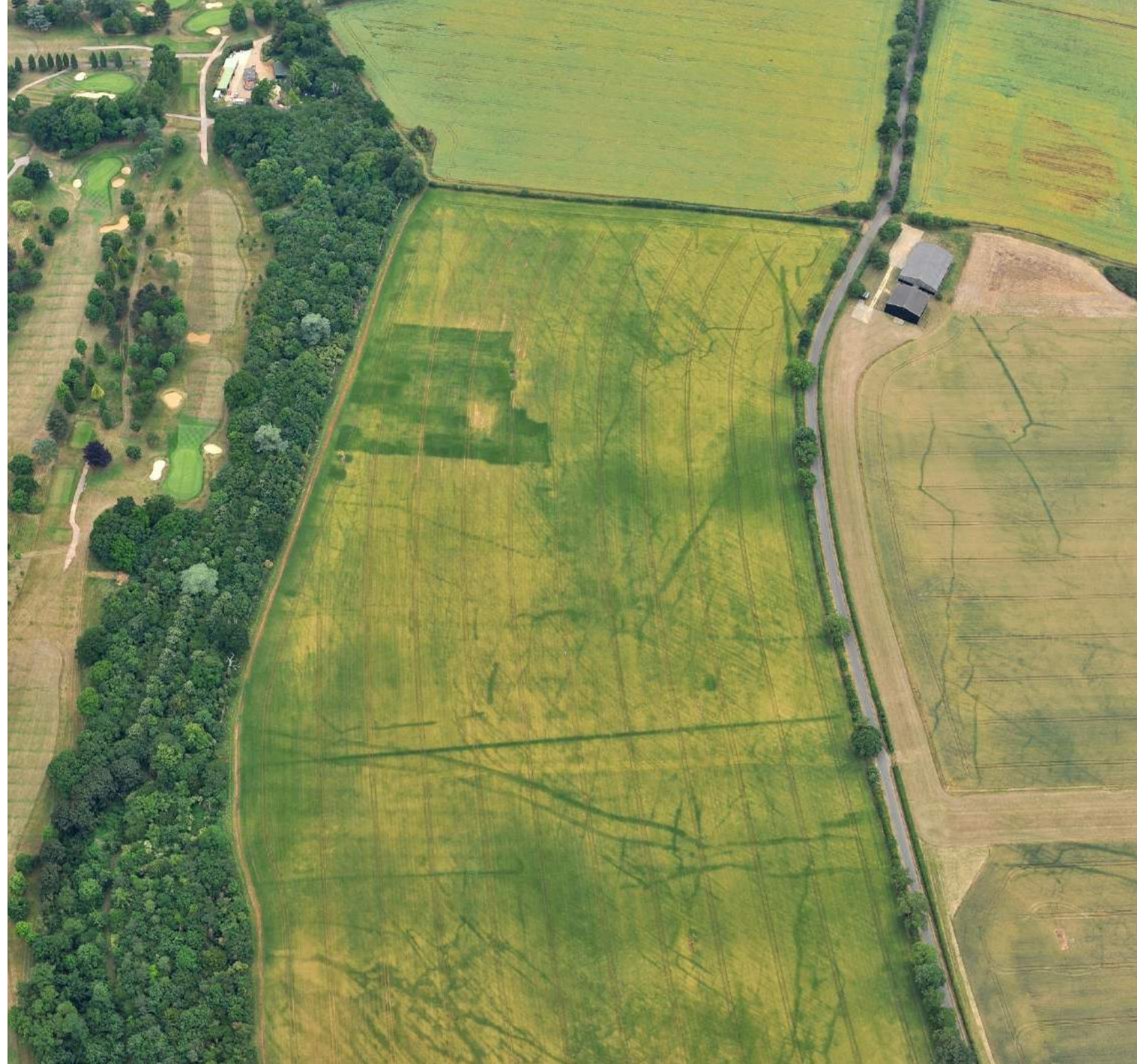
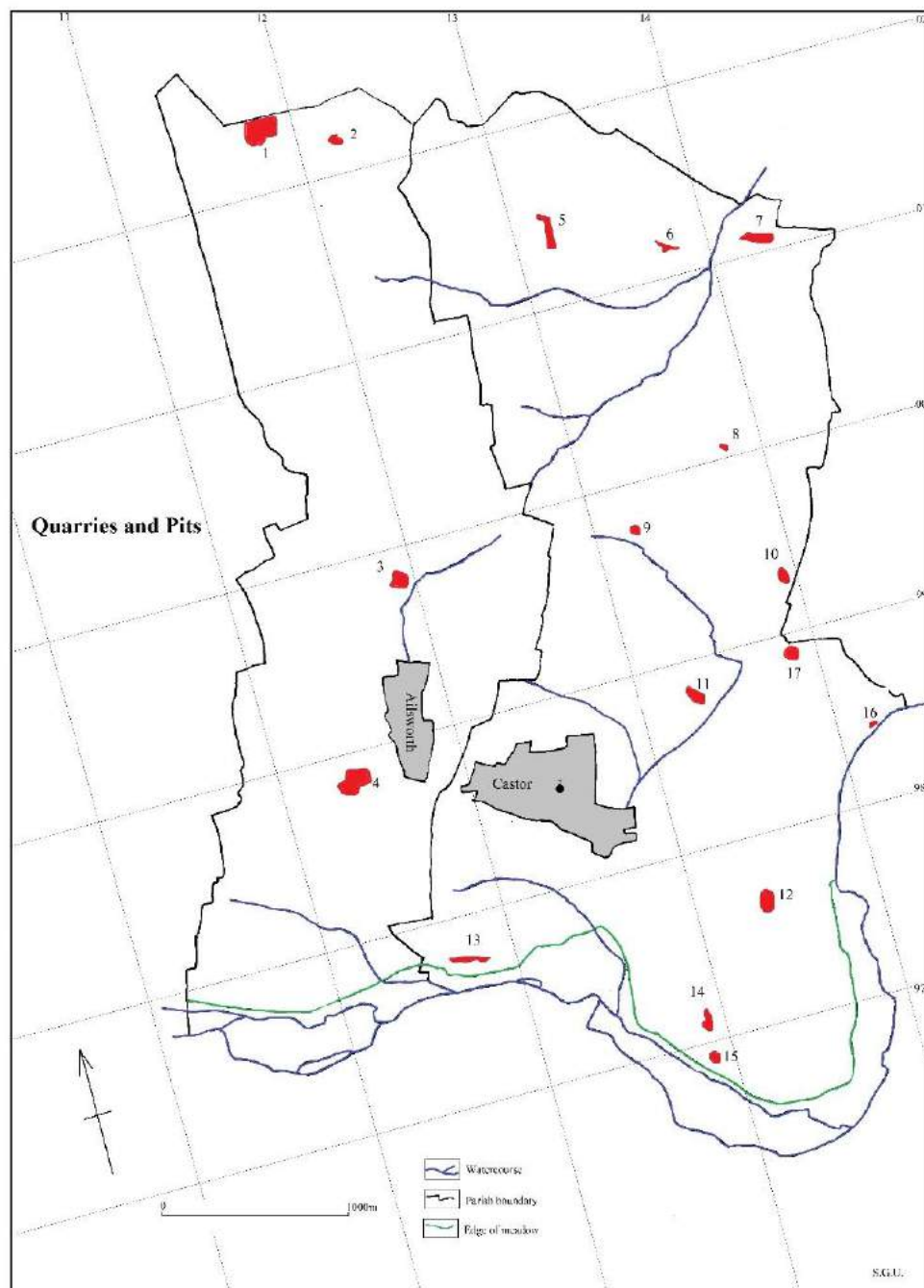


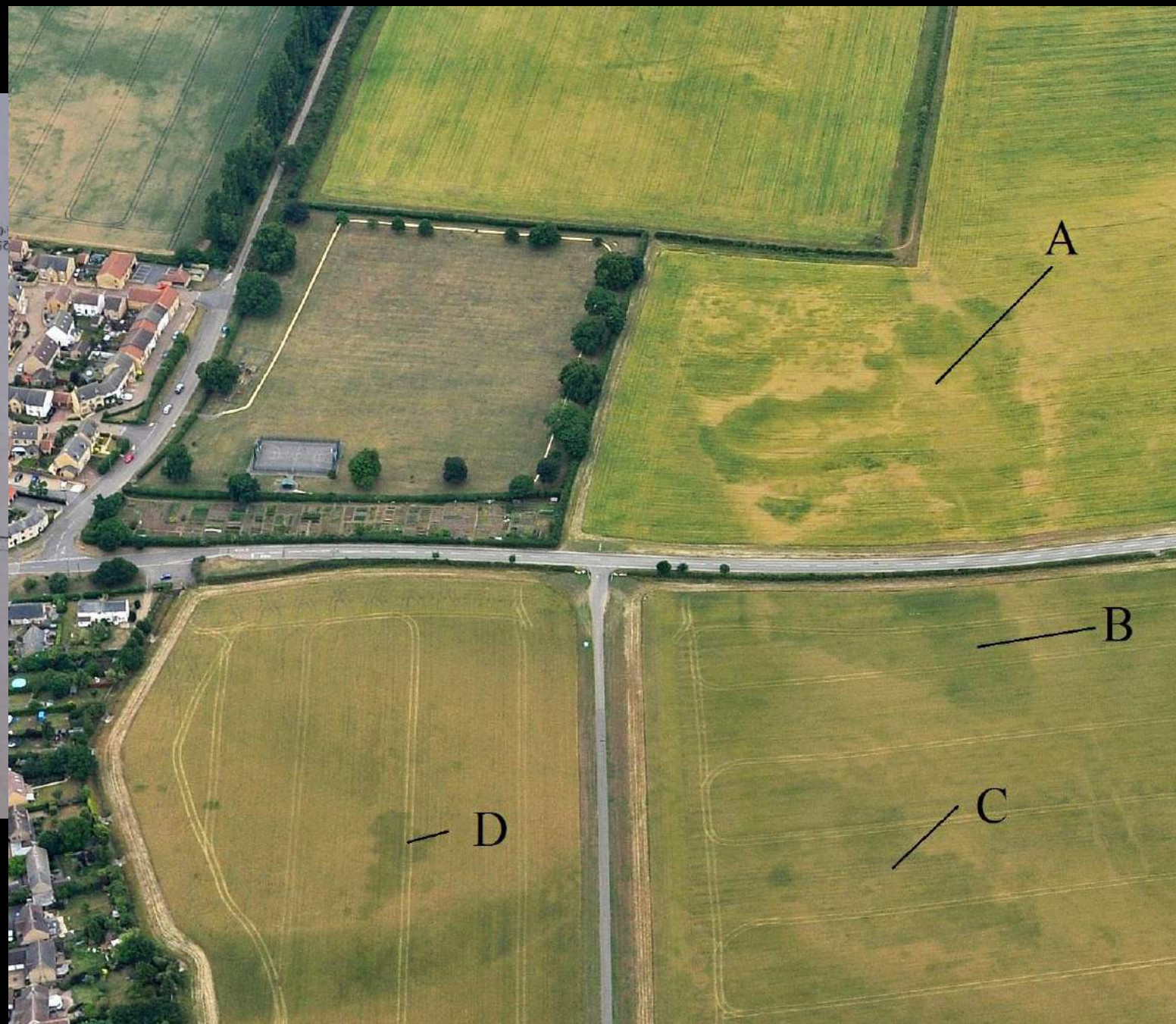


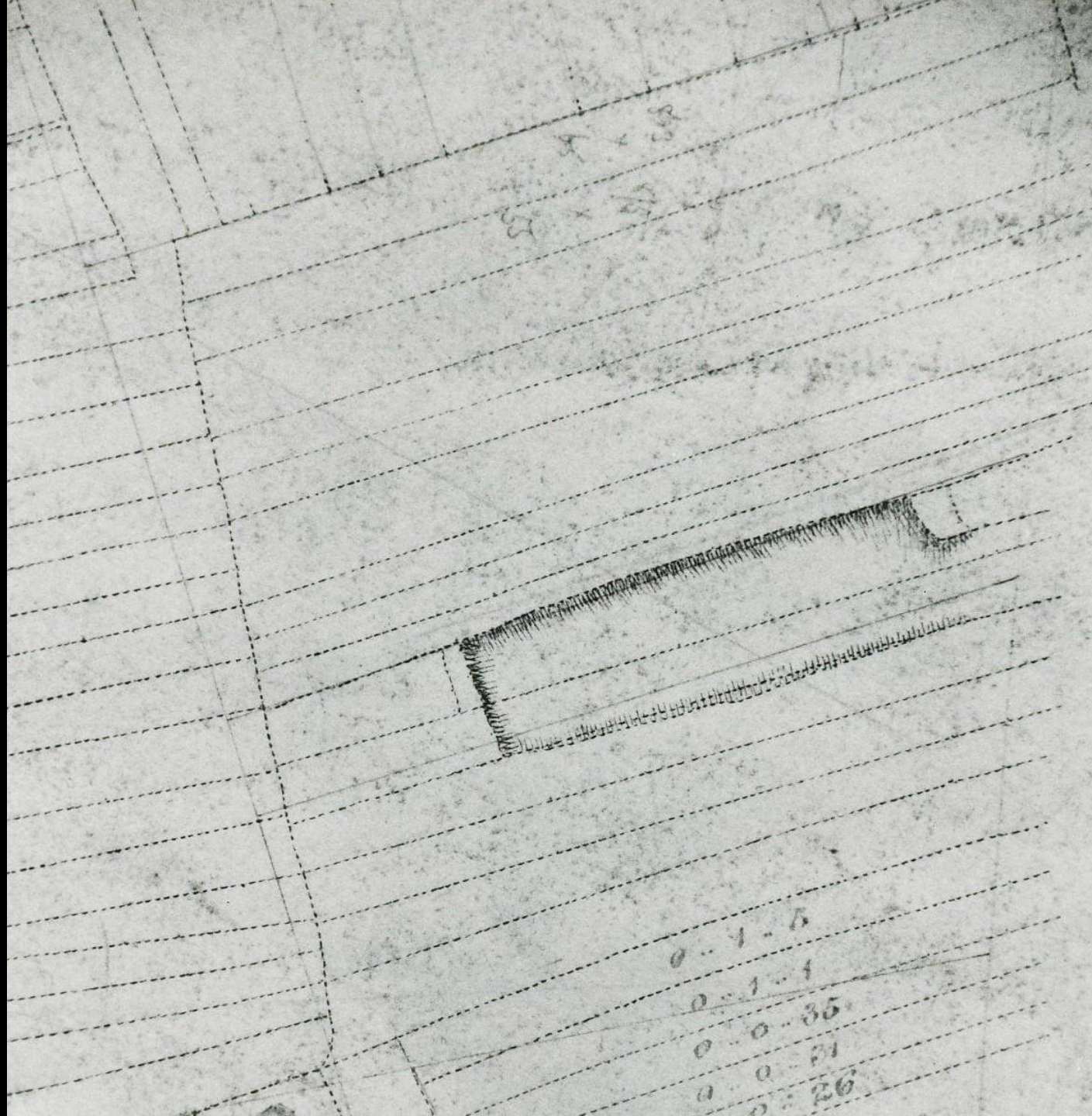
C. 1828



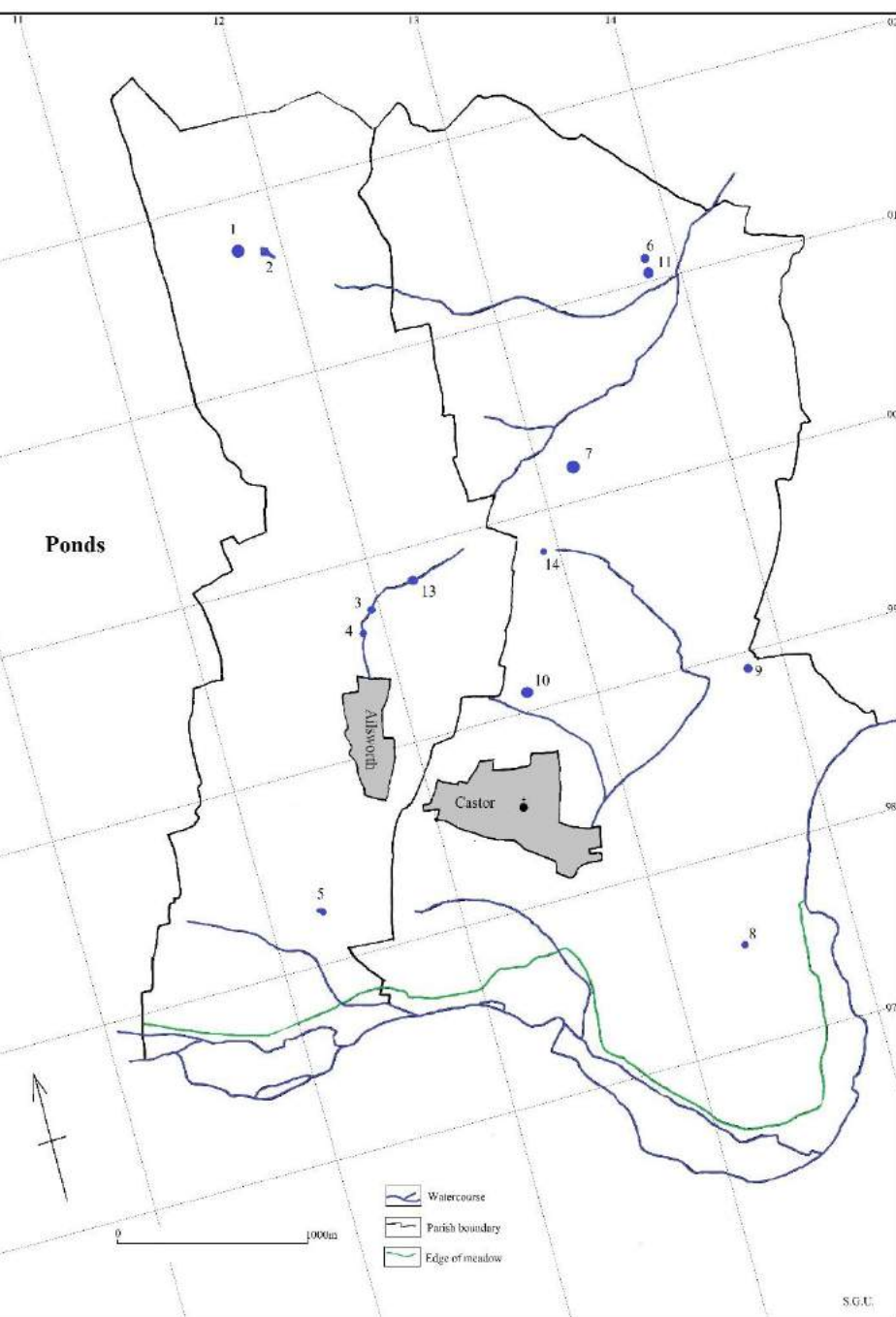
c. 1892



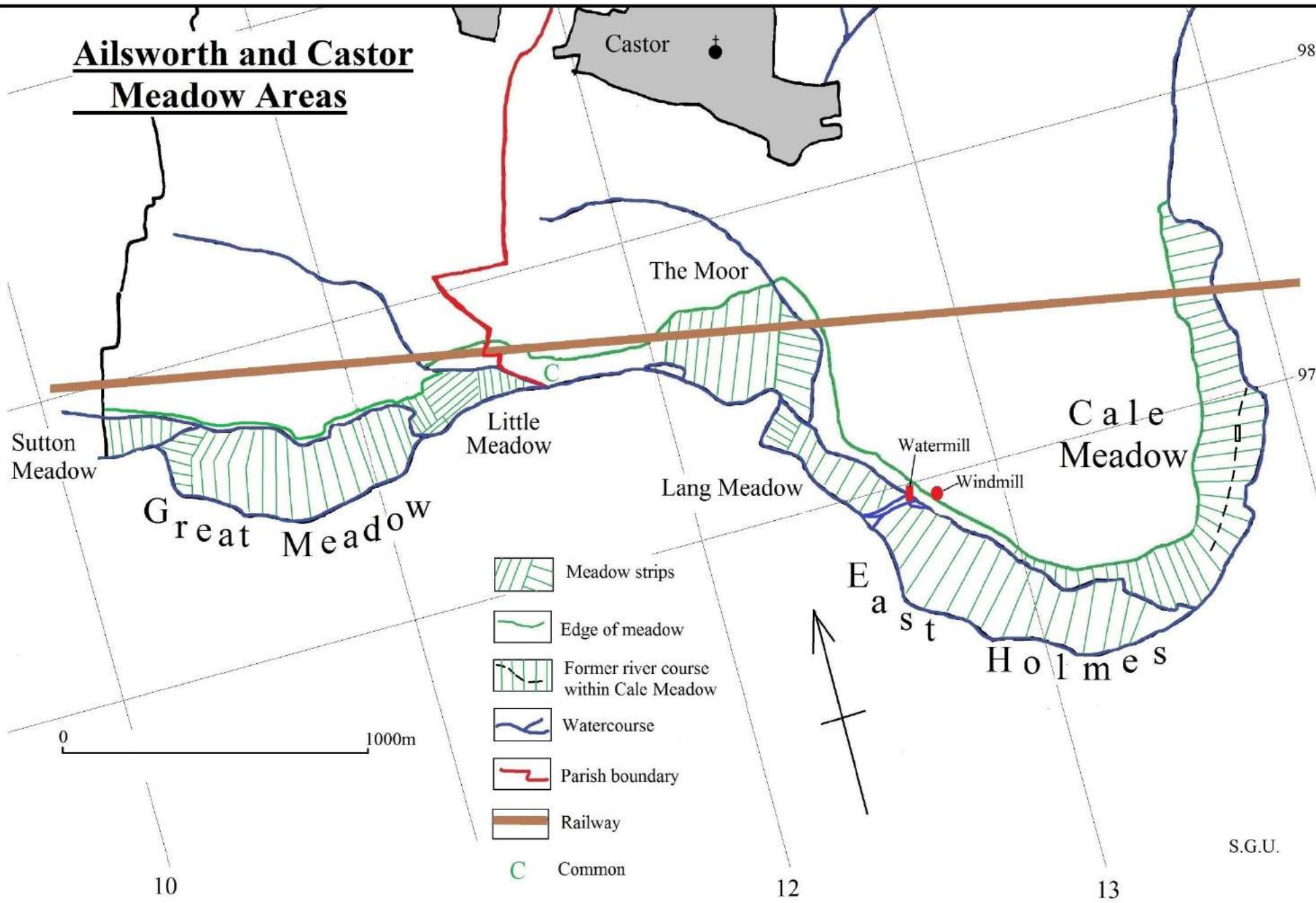


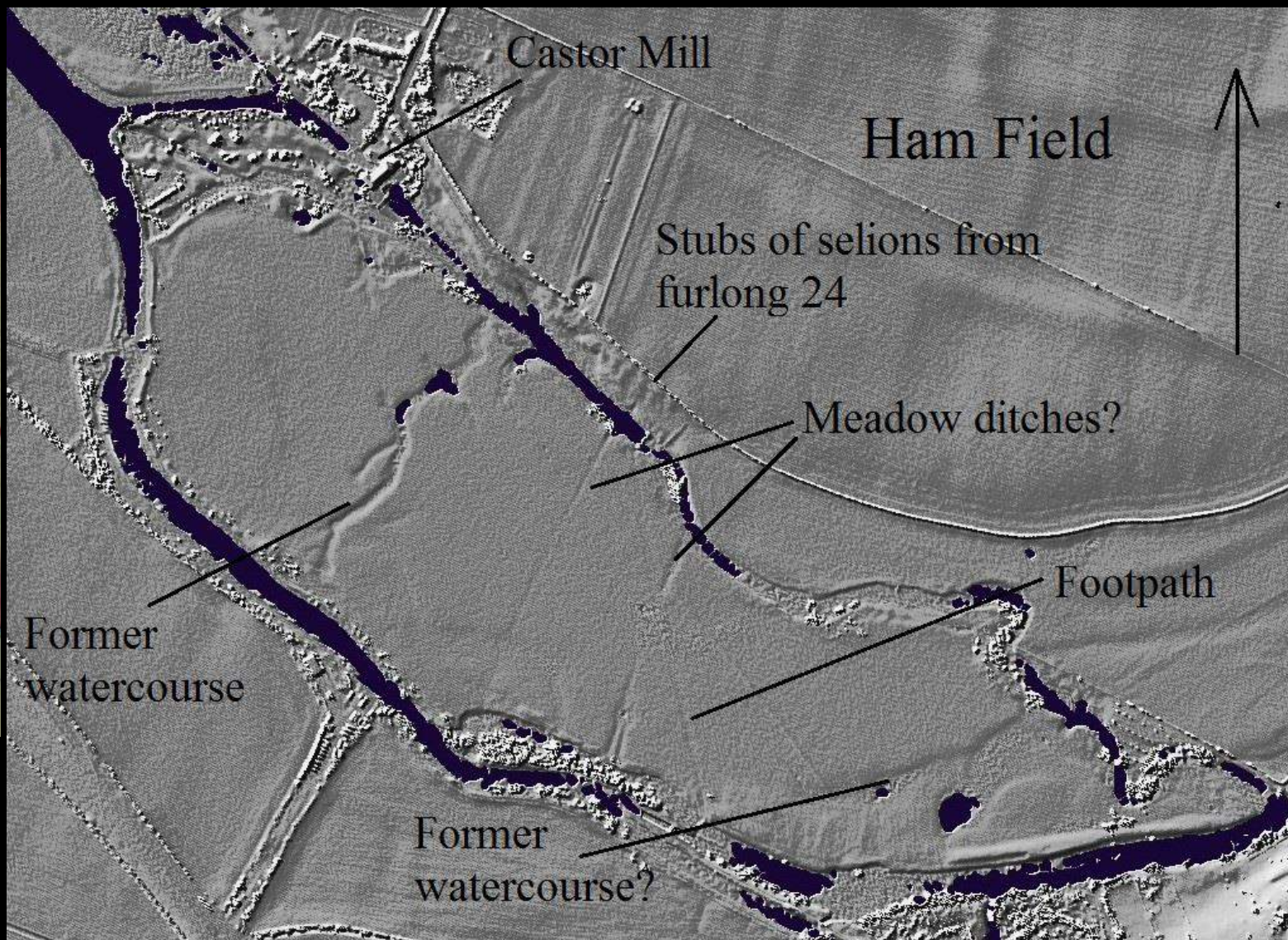


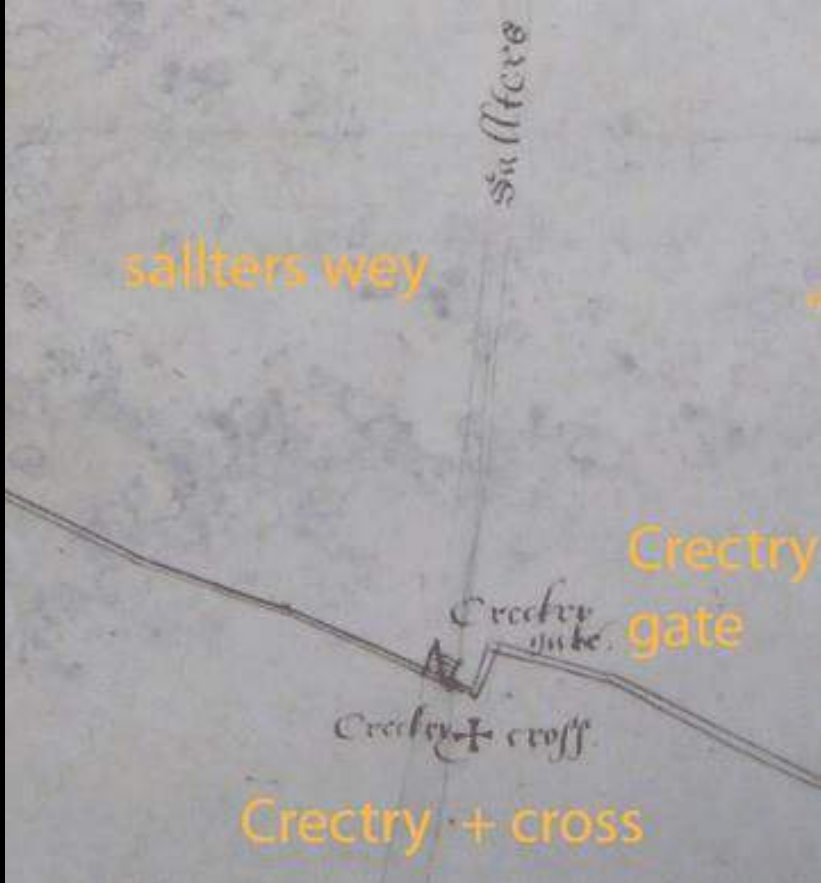
c. 1834

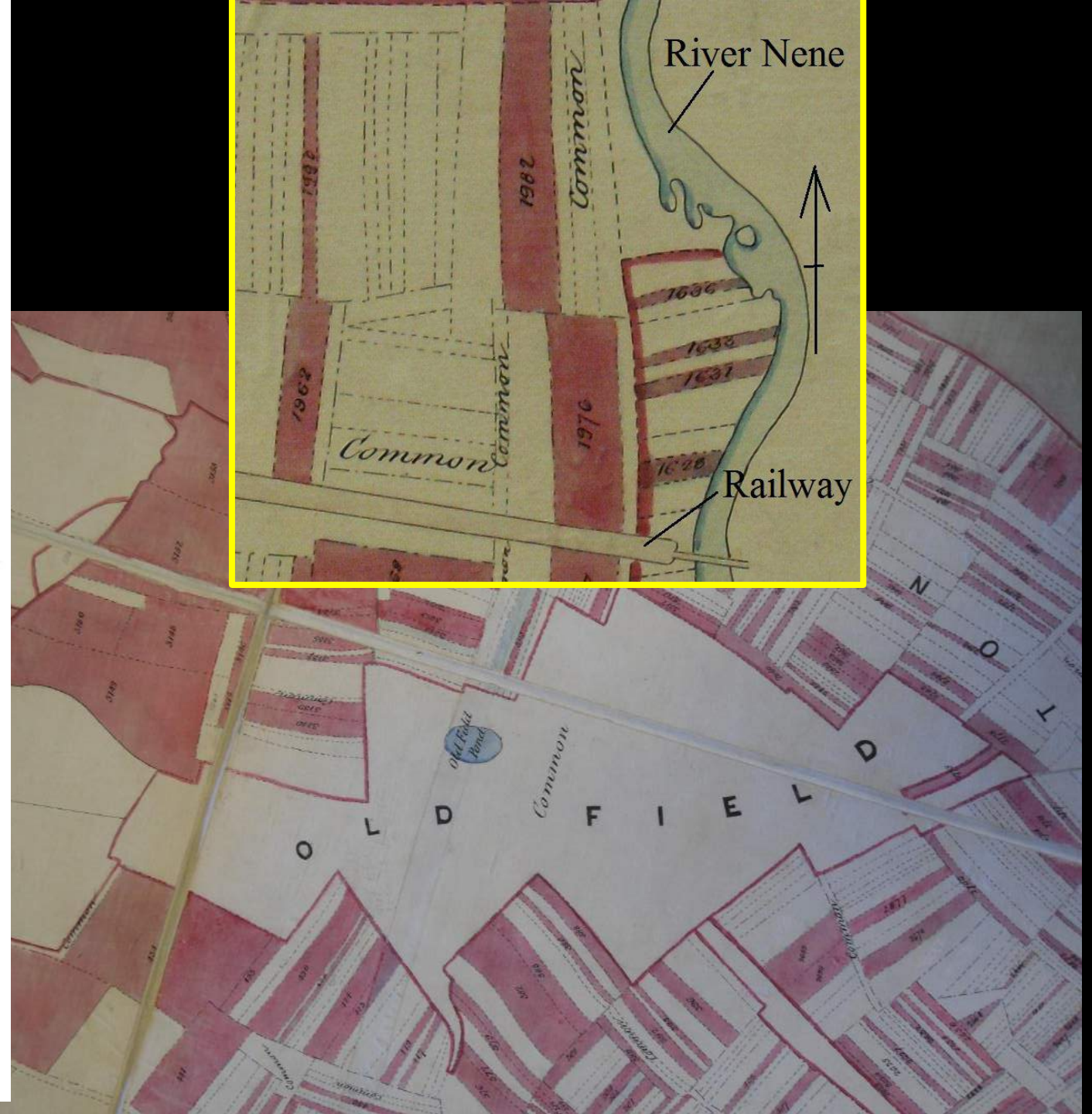
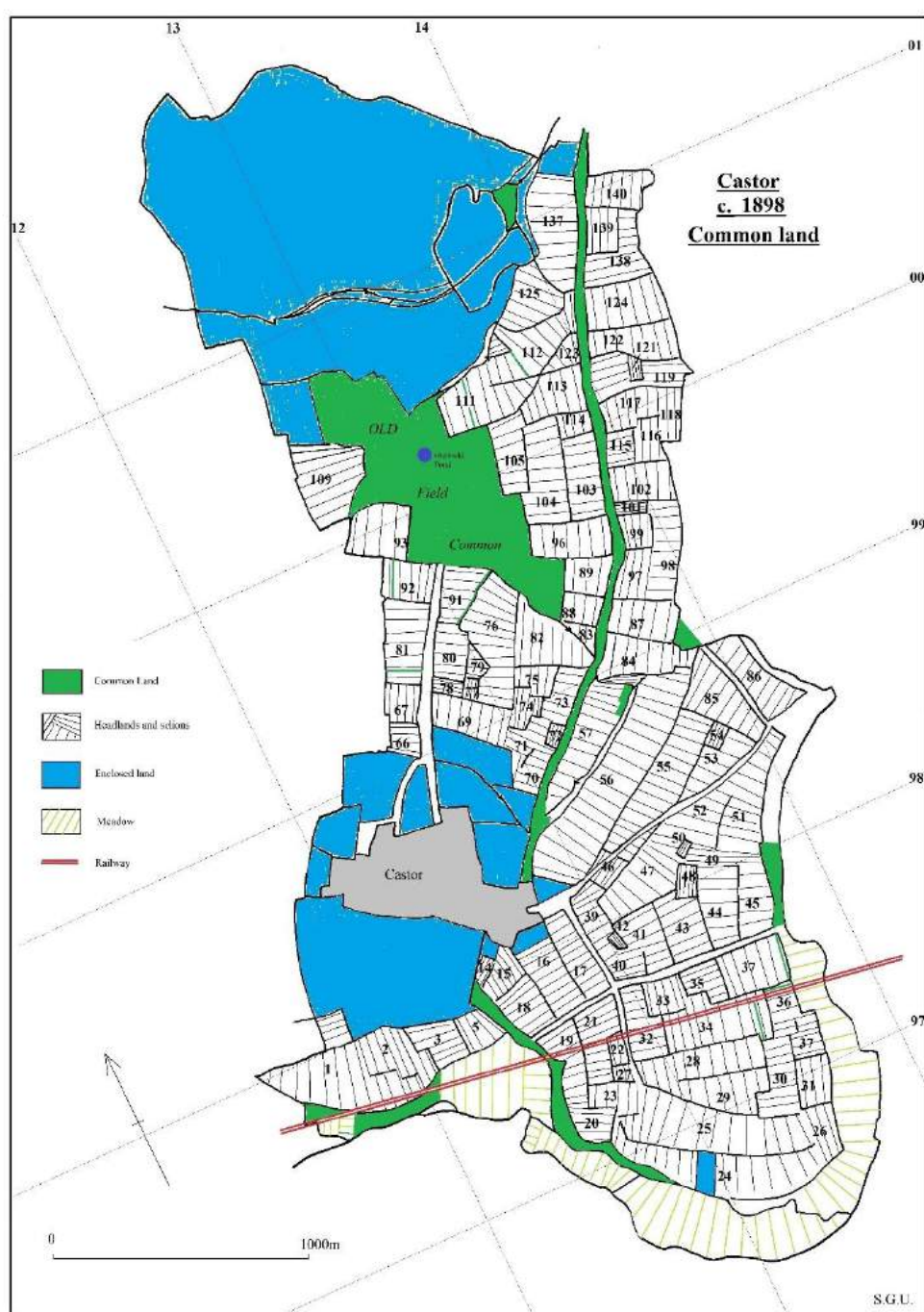


Ailsworth and Castor Meadow Areas





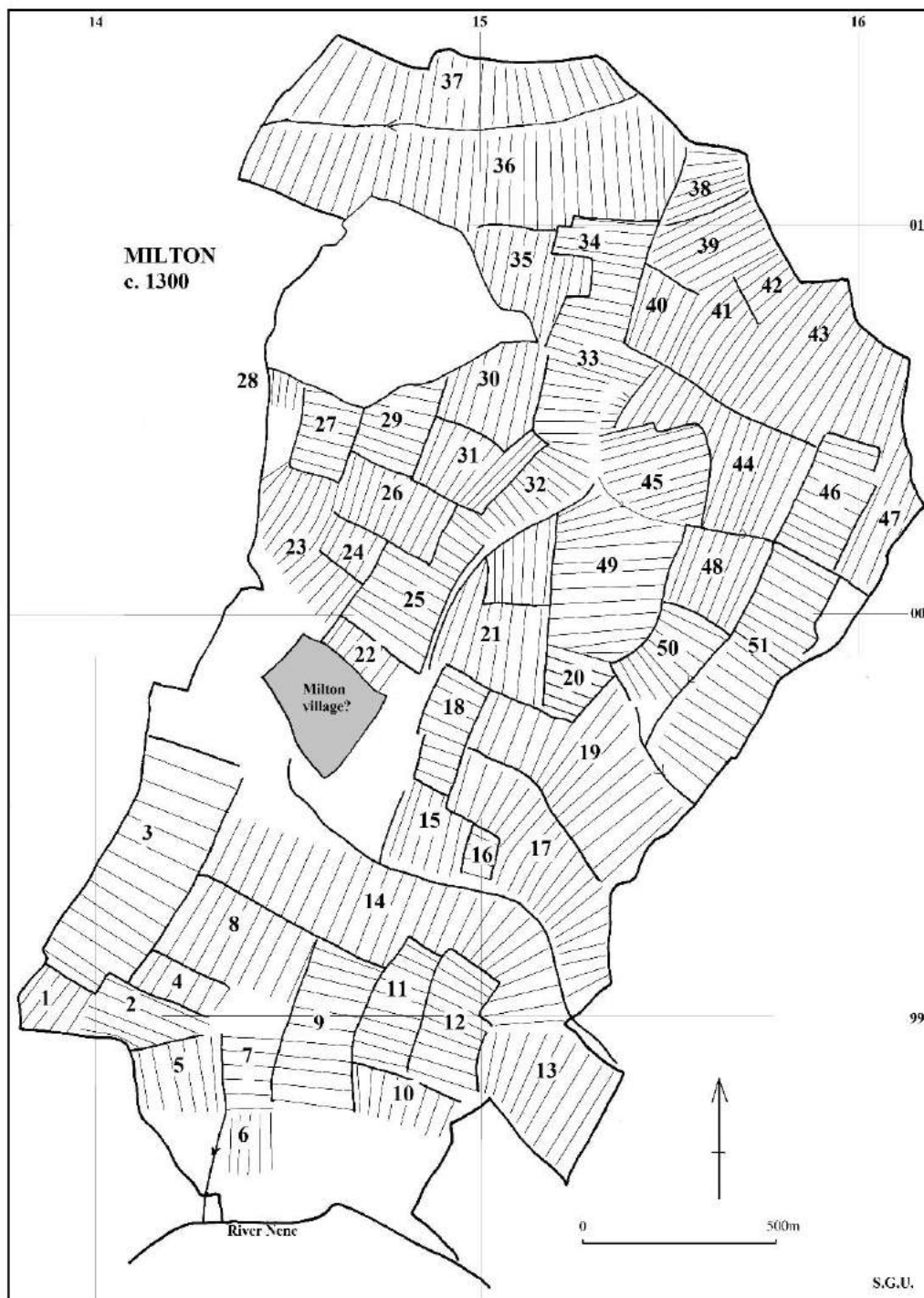


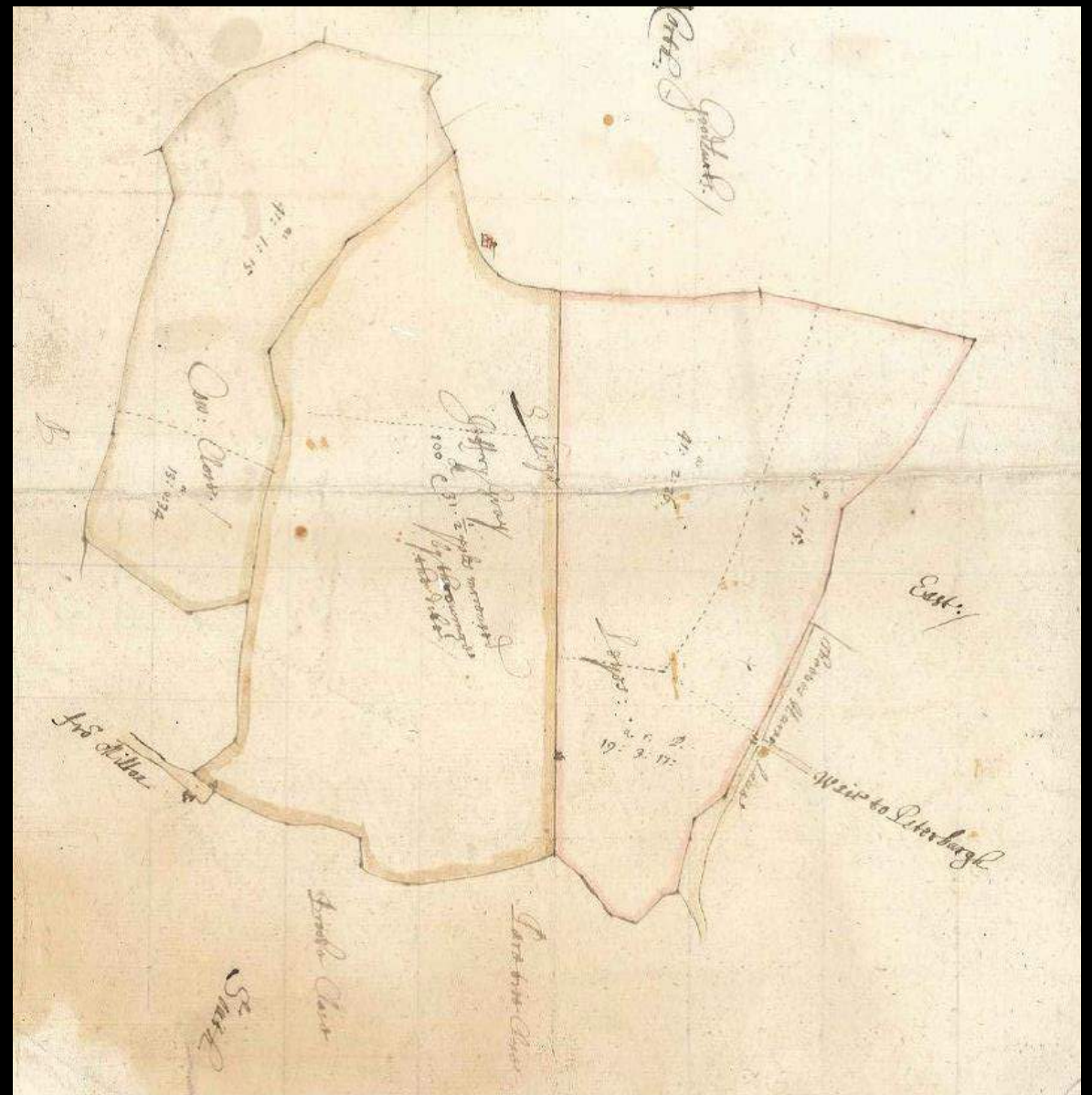
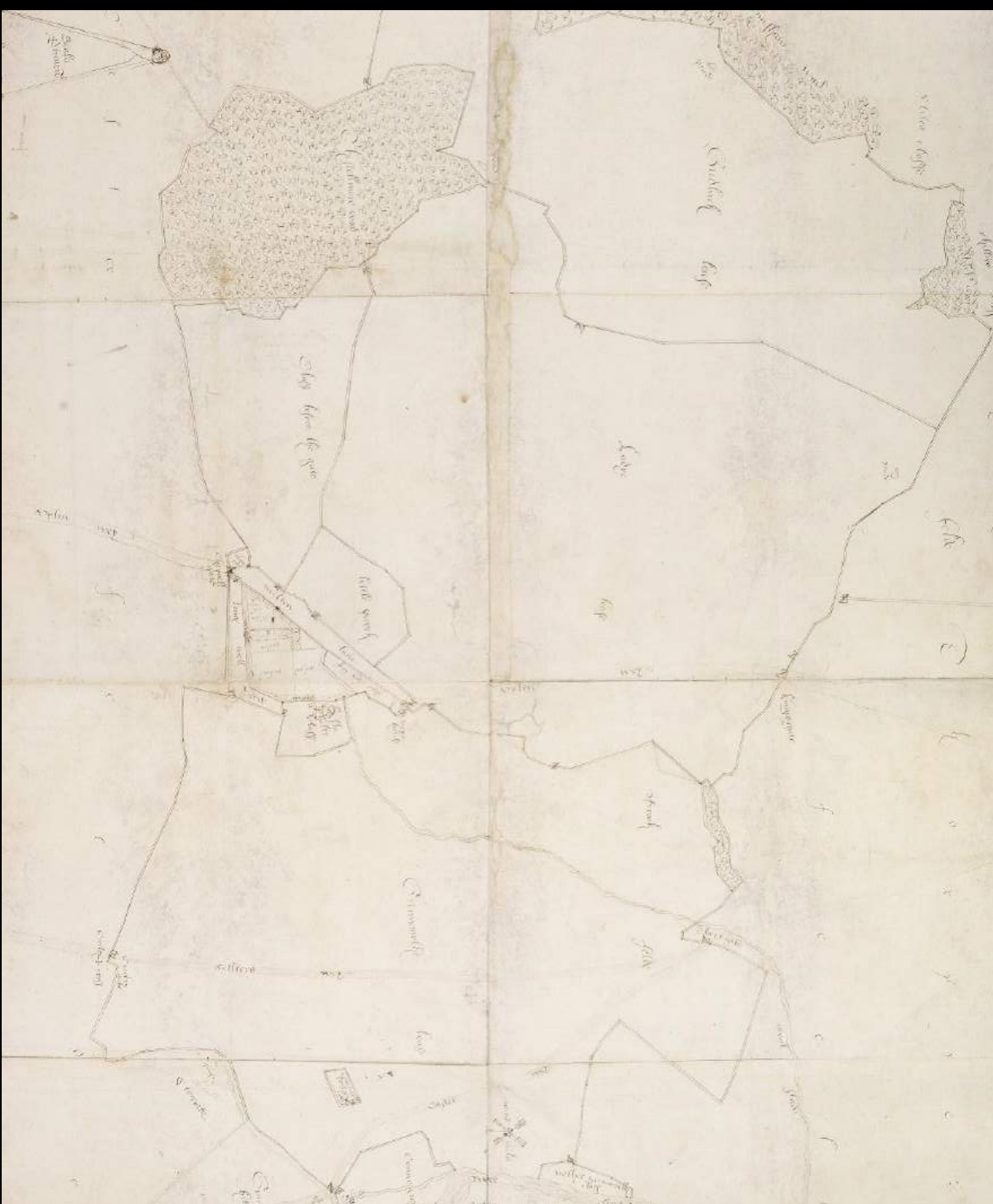














CHAPTER lxxvii.

An Act to confirm a Provisional Order of the Board of Agriculture relating to the Inclosure of certain Lands in the Parishes of Castor and Ailsworth in the County of Northampton. A.D. 1895
[6th July 1895.]

WHEREAS the Board of Agriculture did in pursuance of the Inclosure Acts 1845–1882 issue in the year one thousand eight hundred and ninety-four the Provisional Order of Inclosure set forth in the schedule hereto and in a special report certified that it was expedient that the same should be confirmed by Parliament: 8 & 9 Vict.
c. 118. &c.

And whereas a Committee of the House of Commons to which the same Provisional Order was referred recommended that the same ought to be confirmed by Parliament without modification:

And whereas the said Inclosure cannot be proceeded with without the previous authority of Parliament:

Be it therefore enacted by the Queen's most Excellent Majesty by and with the advice and consent of the Lords Spiritual and Temporal and Commons in this present Parliament assembled and by the authority of the same as follows:—

1. The Provisional Order of Inclosure set forth in the schedule to this Act is hereby confirmed. Order in
schedule
confirmed.
2. This Act may be cited as the Inclosure (Castor and Ailsworth) Provisional Order Confirmation Act 1895. Short title.

suitable fence be erected thereon by the valuer to the satisfaction of the Board and be afterwards for ever maintained by the body of persons in whom the said piece of land is for the time being vested.

That allotments for field gardens be set out as follows (that is to say):—

Fourteen acres at or near the spots marked C on the said map;

Twelve acres at or near the spot marked D on the said map;

Sixteen acres at or near the spot marked E on the said map.

That the following objects be preserved (that is to say):—

(a.) The tree known as “Salter's tree”;

(b.) The road and banks forming the old Roman Road called Ermine Street;

(c.) The two stones called Robin Hood and Little John.







1. A unique landscape- RCHM 1969 '*Archaeologically the parish is one of the most complex in the country*'
2. Roman landscape of *International importance*
3. Little Research into post Roman landscape- but there are major Saxon and medieval features of national importance
4. Visual Setting – No outlying farms, open field aspect- a product of late enclosure – again exceptional
5. Preservation of archaeological and landscape features exceptional – due to late enclosure and farm management
6. Exceptional documentary survival - links with landscape research
7. Datable landscape features linked to ecologically important areas
8. The landscape continuity within these parishes provides a vital and important opportunity to unravel the way that English landscape has evolved



